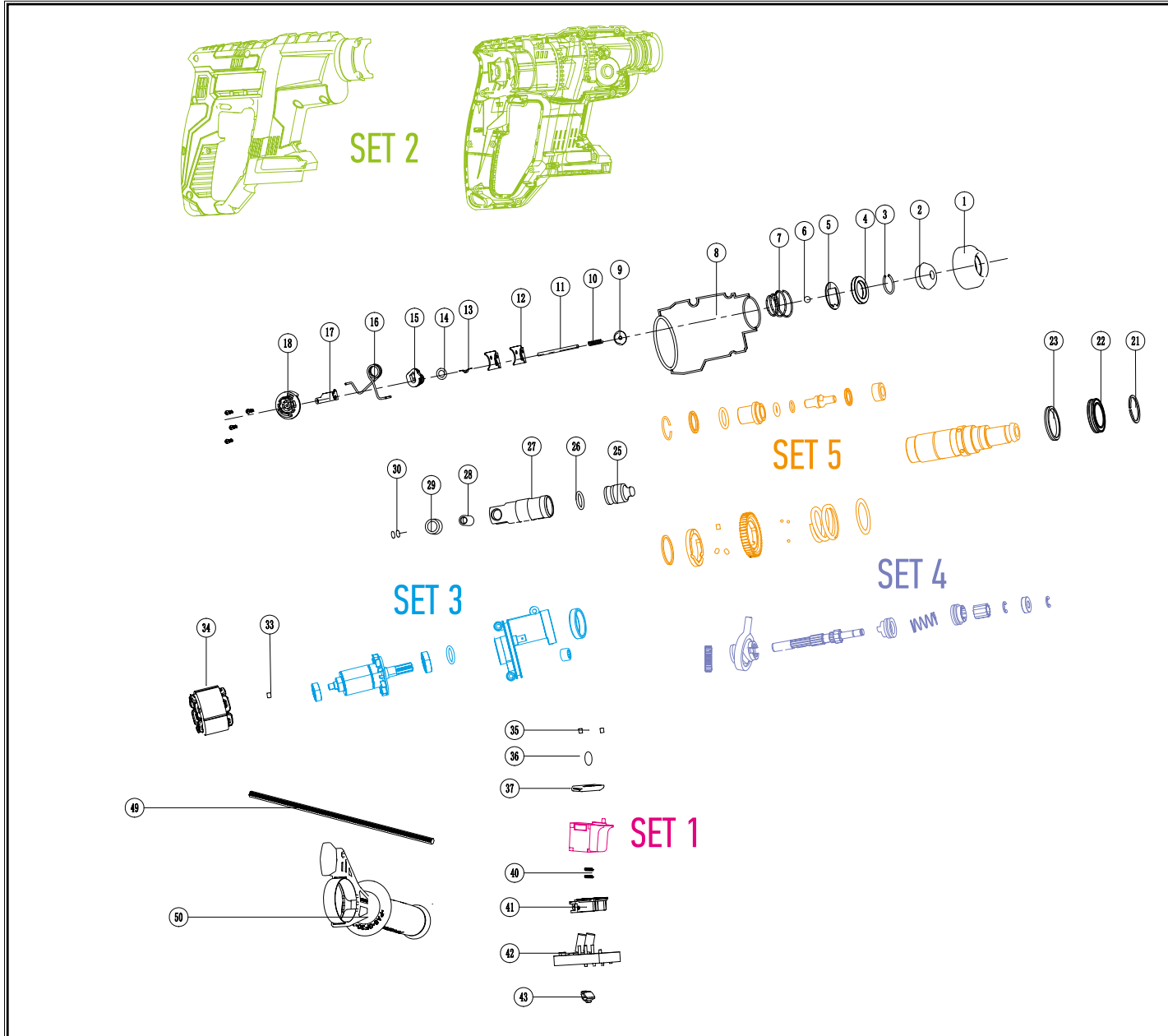


POS.	CODE	DESCRIPTION	QTY
1	A01912	CHUCK SEAL COVER	1
2	A01913	CHUCK COVER	1
3	A01914	ROUND WIRE RING Ø20mm	1
4	A01915	CHUCK SPACER 21x31,8x5mm	1
5	A01916	CHUCK WASHER 3,5x1,2mm	1
6	A01917	STEEL BALL Ø7mm	1
7	A01918	CHUCK SPRING	1
8	A01919	HOUSING SEAL RUBBER	1
9	A01920	SPRING WASHER	1
10	A01921	SPRING	1
11	A01922	PIN 3,5x53,8mm	1
12	A01923	GEAR SHIFT PLATE	2
13	A01924	SPRING ROD	1
14	A01925	O-RING 8x2,5mm	1
15	A01926	SHIFT SPRING CONVERTER	1
16	A01927	GEAR SPRING	1
17	A01928	GEAR LOCK PLATE	1
18	A01929	GEAR KNOB	1
21	A01114	SNAP RING Ø23mm	1
22	A01101	SINGLE ROW BALL BEARING 6805 DDU	1
23	A01072	SEAL 30x37x4mm	1
25	A01143	RAM	1
26	A01157	O-RING 15x2,45mm	1
27	A01204	PISTON	1
28	A01211	PISTON PIN 10,8x20mm	1
29	A01221	WASHER 11,3x16,5x1,2mm	2



POS.	CODE	DESCRIPTION	QTY
30	A01233	SPACER 8,8x0,5mm	2
33	A00892	SEALING WOOL	1
34	A00668	FIELD WITH WIRING	1
35	A01935	HOUSING ANTI-VIBRATION	2
36	A01936	GEAR SHAFT WASHER	1
37	A01937	ROTATION DIRECTION BUTTON	1
40	A01939	SPRING	1
41	A01940	BATTERY CONNECTOR	1
42	A01941	ELECTRONICS	1
43	A01942	INDICATOR COVER	1
49	A01943	DEPTH GAUGE	1
50	A01944	AUXILIARY HANDLE	1
SET 1	A01938	TRIGGER SWITCH	1
SET 2	A01934	LEFT & RIGHT HOUSINGS, SET 2PCS	1
SET 3	A01002	GEARBOX HOUSING WITH ARMATURE	1
SET 4	A01037	DRIVE SHAFT WITH PARTS	1
SET 5	A01038	CYLINDER WITH STRICKER & CLUTCH	1